



WE INVEST FOR THE FUTURE

We did inspiring things in the past.
Now, we aim for greater things for the future.

ABOUT US

Elit Pharma started its journey to provide world-class quality products to its customers in the Cosmetics and Food Supplements industries in 2003, and since then, has successfully become one of the most innovative manufacturing and marketing companies in Turkey.

With ISO 9001, ISO 22000, ISO 22716, and ISO 13485 certificates, obtained from accredited institutions, and a Good Manufacturing Practices certificate from the Ministry of Health, Elit Pharma has a proven record of manufacturing products at world-class standards under modern and hygienic conditions in 2 separate facilities it established for cosmetics and food supplements.

Starting from the product input, we carefully implement the quality control processes, through every stage, right from manufacturing to shipment, and maintain the trust of our customers and consumers.



With the importance and value it attaches to its business, Elit Pharma creates its formulas in its advanced laboratories without compromising on quality. In its formulas, the Company uses pharmaceutical-grade raw materials, special active ingredients, and herbal extracts that meet European standards. Each product is designed with raw materials that are compliant with European Regulations and with clinically supported efficacy.

We are glad to offer you the right and reliable products in the cosmetics and food supplements categories. Elit Pharma Family will continue to be the best solution partner for you, with its constantly improving team that embraces innovations in R&D, P&D, and PRODUCTION.

With its brands, Elit Pharma Group will continue its activities, in line with its principles, to maintain the trust of its customers and consumers and ensure its continuity.

OUR MISSION

We produce and support food supplements, cosmetics, and personal care products at international quality standards without harming human health and the environment, and ensure they are available in all pharmacies throughout the country.

With our strong brands in domestic and foreign markets, we aim to meet the expectations of customers who want to improve their quality of life with our products and services.

We carry out all these activities with our qualified, passionate, competent, and happy employees and under the awareness of the demands of society.



OUR VISION

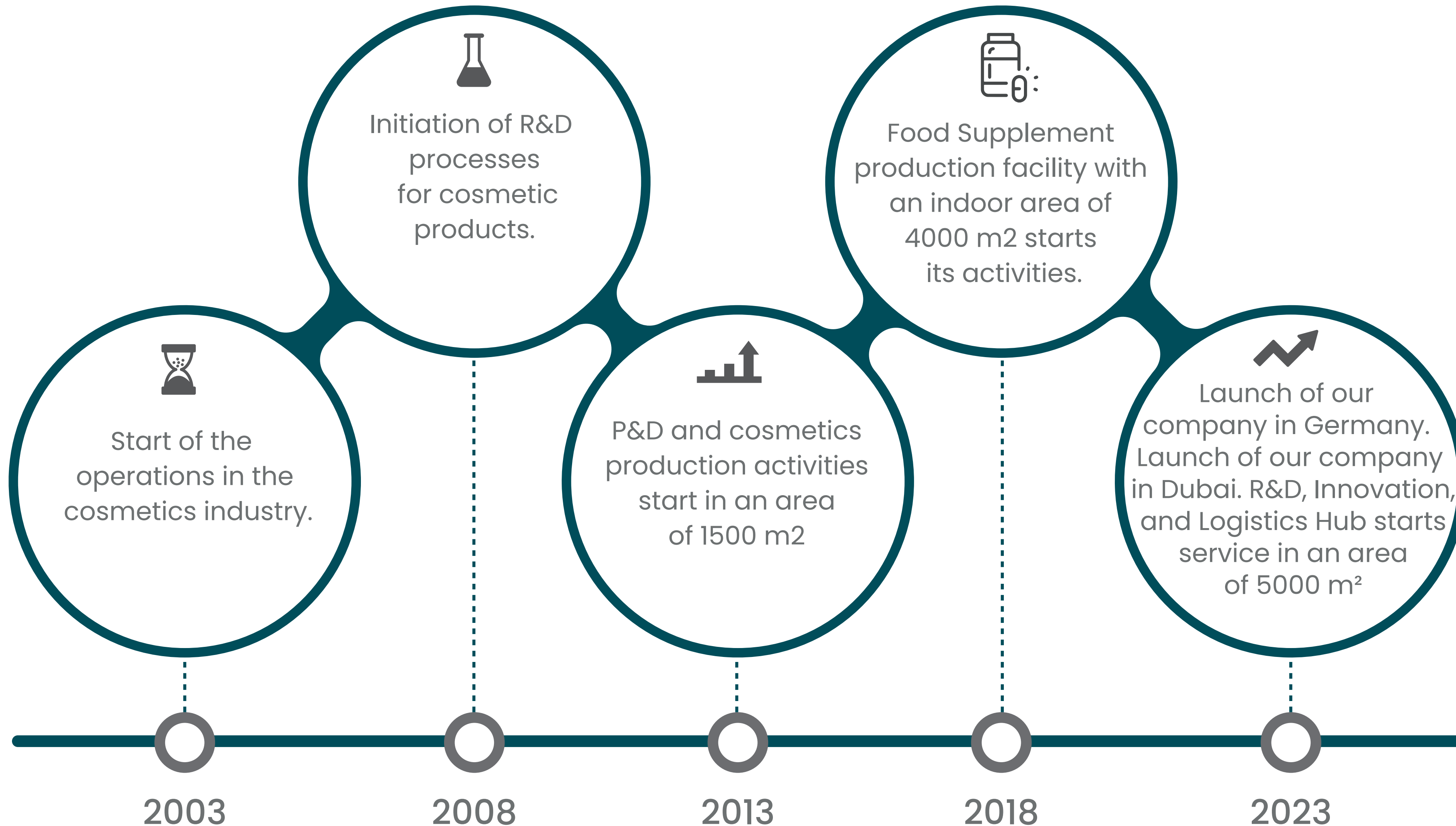
We respond quickly to market conditions and offer the necessary products and services in line with changing consumer needs.

We compete with international companies in domestic, regional, and neighboring markets in the categories we operate in and create added value for our country.

We aim to improve our production, planning, and distribution capabilities without compromising on our product and service quality to get new customers who will purchase our products time and time again and become a corporate and permanent organization.



HISTORY



STRENGTHS

- A financially strong structure
- Two separate manufacturing plants
- R&D, Innovation, and Logistics Hub
- Advanced R&D capability
- High manufacturing capacity
- Customer orientation
- Strong export network



Cosmetics Manufacturing Plant



Food Supplement Manufacturing Plant



R&D - Innovation - Logistics Center



ELIT PHARMA

Kozmetik ve İlaç Sanayi

OUR GROUP COMPANIES

ELIT HEALTH
COSMETICS

Elit Health Cosmetics San. ve Dış Tic.Ltd.Şti

Established in 2018 as a part of Elit Pharma Group, the company is involved in sales, marketing, and domestic and international import and export activities in the healthcare industry.

ELIT BIOTECH
GMBH

Elit Biotech GmbH

Elit Biotech GmbH was established in Germany. The company is based in Germany and operates in the European Market. It is a part of Elit Pharma Kozmetik ve İlaç Sanayi Group.

ELIT PHARMA
LLC

Elit Pharma LLC

Elit Pharma LLC was established in Dubai. The company is based in Dubai and operates in the Middle East. It is a part of Elit Pharma Kozmetik ve İlaç Sanayi Group.

OUR BRANDS

CLINICLAB
BECAUSE WE ARE PROFESSIONAL

validus

HAIRMD
PROFESSIONAL

DentaLab
EXTRA ADVANCED STRONG FORMULA

hairmd
PhytoCellTec™ Malus Domestica

MAXPOWER
SUPPORT
COMPLETE PERFORMANCE COMPLEX

MD PLUS
ADVANCED FORMULATION

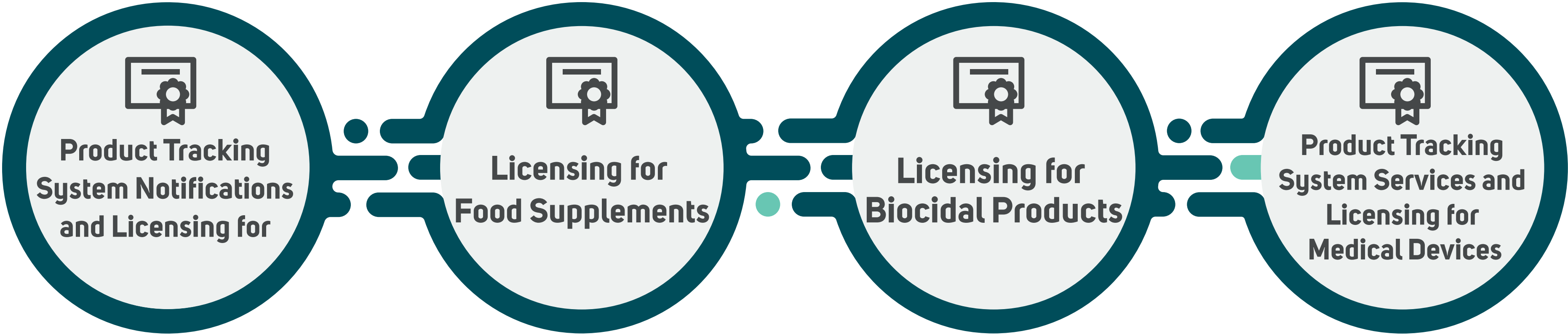
DermoBella
Saç ve Cilt Bakımı / Hair & Skin Care

WE
MADE
PRO

OUR SERVICES



CONSULTANCY



PRODUCT CATEGORIES



Cosmetics



Food Supplements

FIELDS OF ACTIVITY



**Cosmetics &
Dermocosmetics**
(over 300
registered products)

Food Supplements
(130'un üzerinde
ruhsatlı ürün)

Biocidal Products
(over 10 licensed
products)

E-COMMERCE & E-EXPORT

Continuing its e-commerce activities worldwide, Elit Pharma is increasing its market share by shipping products all over the world.

Elit Pharma has successfully increased its market share globally with its robust e-commerce and e-export structure.



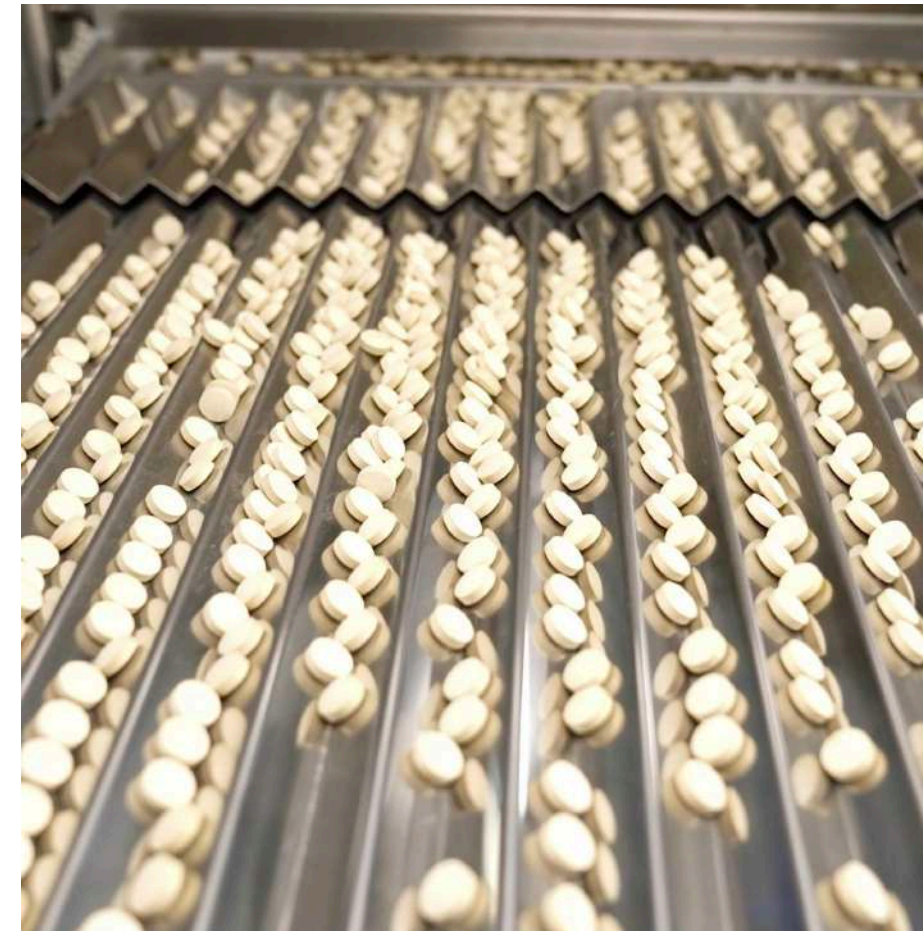
COSMETICS MANUFACTURING PLANT

- Production of Creams and Lotions
- Production of Skincare Serums
- Production of Face Cleansing Gels and Tonics
- Production of Masks and Peelings
- Production of Liquid Soaps
- Production of Shower Gels
- Production of Shampoos
- Production of Personal Care Products
- Production of Baby Care Products
- Production of Natural and Organic Cosmetics
- Production of Male Care Products
- Production of 24K Gold Care Products
- Production of 100% Natural Etco Cosmos Organic
- Production of Certified Cosmetics
- Production of Natural Essential Oils for Aromatherapy
- Formulation of Cosmetics and R&D Support



FOOD SUPPLEMENTS MANUFACTURING PLANT

- Tablets and Vitamins
- Softgel Soft Capsules
- Effervescent Tablets
- Chewable Gummies
- Hard Gelatin Capsules
- Blister Tablets - Capsules
- Fish Oil Softgel Capsules-Syrups
- Syrups - Drops - Vial Drops
- Herbal Pastes
- Liquid Sachets - Powder Sachets - Stick Sachets
- Sports Nutrition and Supplements
- Herbal Mixtures



R&D AND INNOVATION CENTER

- R&D Laboratory for Food Supplements
- R&D Laboratory for Cosmetics
- Quality Control Laboratory
- Quality Assurance Analysis Laboratory
- Packaging Control Laboratory
- Phytotherapy Product Development Laboratory
- Innovation and R&D Laboratory for Packaging
- Microbiological Test Laboratory
- Physical and Chemical Analysis Laboratory



LOGISTICS HUB

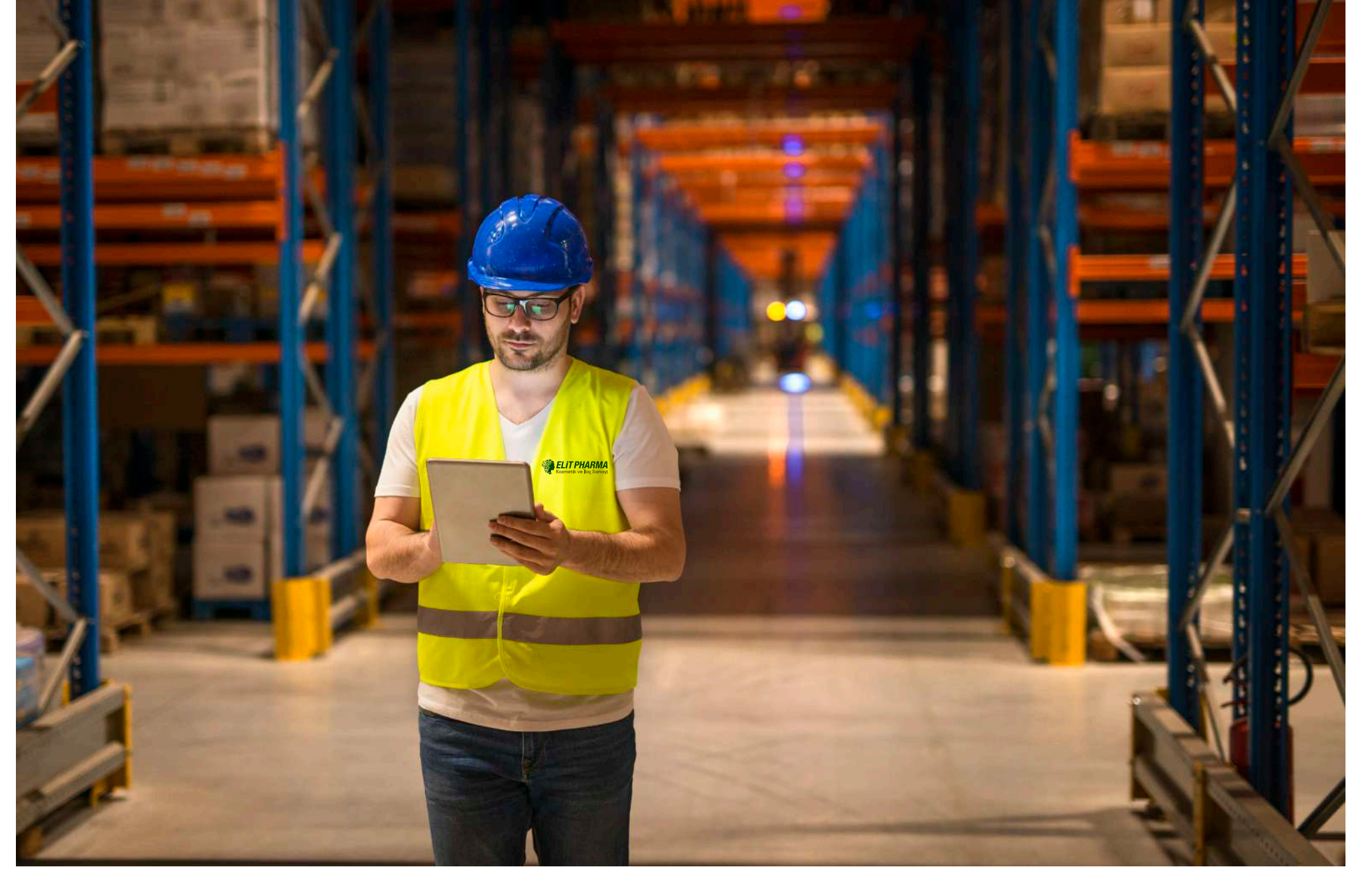
As Elit Pharma logistics department, we conduct business activities in a 3000 m2 indoor storage area.

We use LOGO TIGER ENTERPRISE as ERP in our warehouses. We have dedicated air conditioning and ventilation systems to ensure that the warehouse conditions comply with the Good Manufacturing Practices standards of the Turkish Ministry of Health.

We collect and archive data by our thermometers and hygrometers we placed in certain parts of the warehouses to measure temperature and humidity. All technological equipment used for measuring and weighing purposes and by logistics departments is calibrated by accredited organizations in accordance with world standards at regular intervals.

Our quality assurance team carefully carries out the reporting and documentation processes to ensure the smooth execution of the processes, for the problems that may arise after the delivery of products to customers.

Our logistics department closely cooperates with our export operations team to deliver orders right to the doors of customers all over the world. Accredited institutions perform and report regular maintenance for all loading, stacking, and lifting machinery and equipment, fire extinguishers, electricity installations, and generators in our warehouses.





“SUSTAINABILITY IS IN OUR DNA”

Environmental Sustainability

We take measures to increase energy and water efficiency in production processes.

We use solar energy to meet 25% of the energy needs of our facilities.

We carefully follow environmental and waste management policies and implement recycling processes.

We prioritize environmentally friendly practices in packaging and logistics activities.

We implement innovative solutions to reduce the environmental impact of our products.

Social Sustainability

We care about the well-being and safety of our employees.

We offer training and development opportunities to our employees.

We support social responsibility projects.

We ensure compliance with ethical standards and human rights in the supply chain.

Economic Sustainability

We care about business ethics and transparency.

We attach importance to innovation by conducting R&D and P&D activities to develop innovative products and processes.

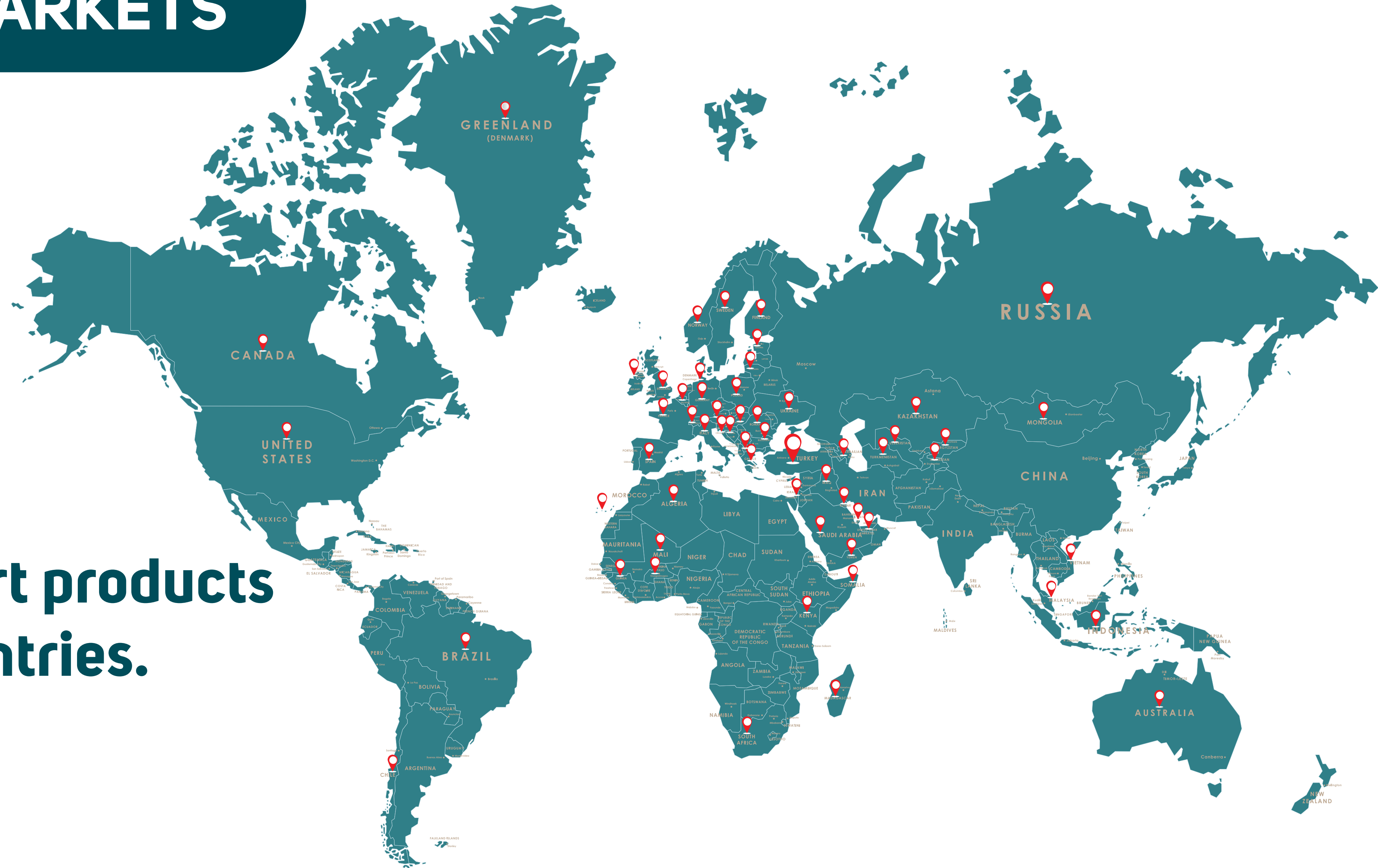
We work to ensure sustainable financial success in line with our company's growth targets.

We create long-term value and sustainable partnerships with our stakeholders.

EXPORT MARKETS



**We export products
to 50+ countries.**



ADDED VALUE WE CREATE

- 2 separate manufacturing plants
- Cosmetics manufacturing plant with Good Manufacturing Practices certification from the Ministry of Health
- Food Supplements manufacturing plant with Good Manufacturing Practices certification
- Innovation, R&D, and Logistics Hub in an additional 5000 m² area outside our plants
- Group companies established in Germany and Dubai
- More than 400 barcoded and licensed products in 8 different categories
- Participation in international fairs
- Collaborations with universities and industries
- Creating jobs

PARTICIPATION IN FAIRS

- Dubai / Duphat Fuarı 2023
- Switzerland/ Vitafoods 2023
- Italy / Cosmoprof 2023
- Turkey / Beauty Eurasia Fair 2023



Dubai / Duphat Fuarı



Switzerland/ Vitafoods 2023



Italy / Cosmoprof 2023



Turkey / Beauty Eurasia Fair 2023

Cosmetics Manufacturing Plant

Karayolları Mahallesi Cebeci Caddesi
No:204/A G.O.Paşa - İstanbul

Food Supplement Manufacturing Plant

Karayolları Mahallesi 563. Sokak
No: 19 Gaziosmanpaşa - İstanbul

R&D and Logistics Hub

Pirinççi Köyü Asfaltboyu mah.
Eski Edirne Asfaltı No:94 Eyüp Sultan - İstanbul

ELİT BIOTECH GMBH

Sirius Business Park Carl Reuther Straße 1, Geb. 230
1. OG 68305, Mannheim, Germany
M:+49 152 59163263 P:+49 621 16797698
info@elitbiotech.de

ELİT PHARMA LLC

Office 501, 5th floor, Aspin Commercial Tower,
Sheikh Zayed Road Dubai / UAE